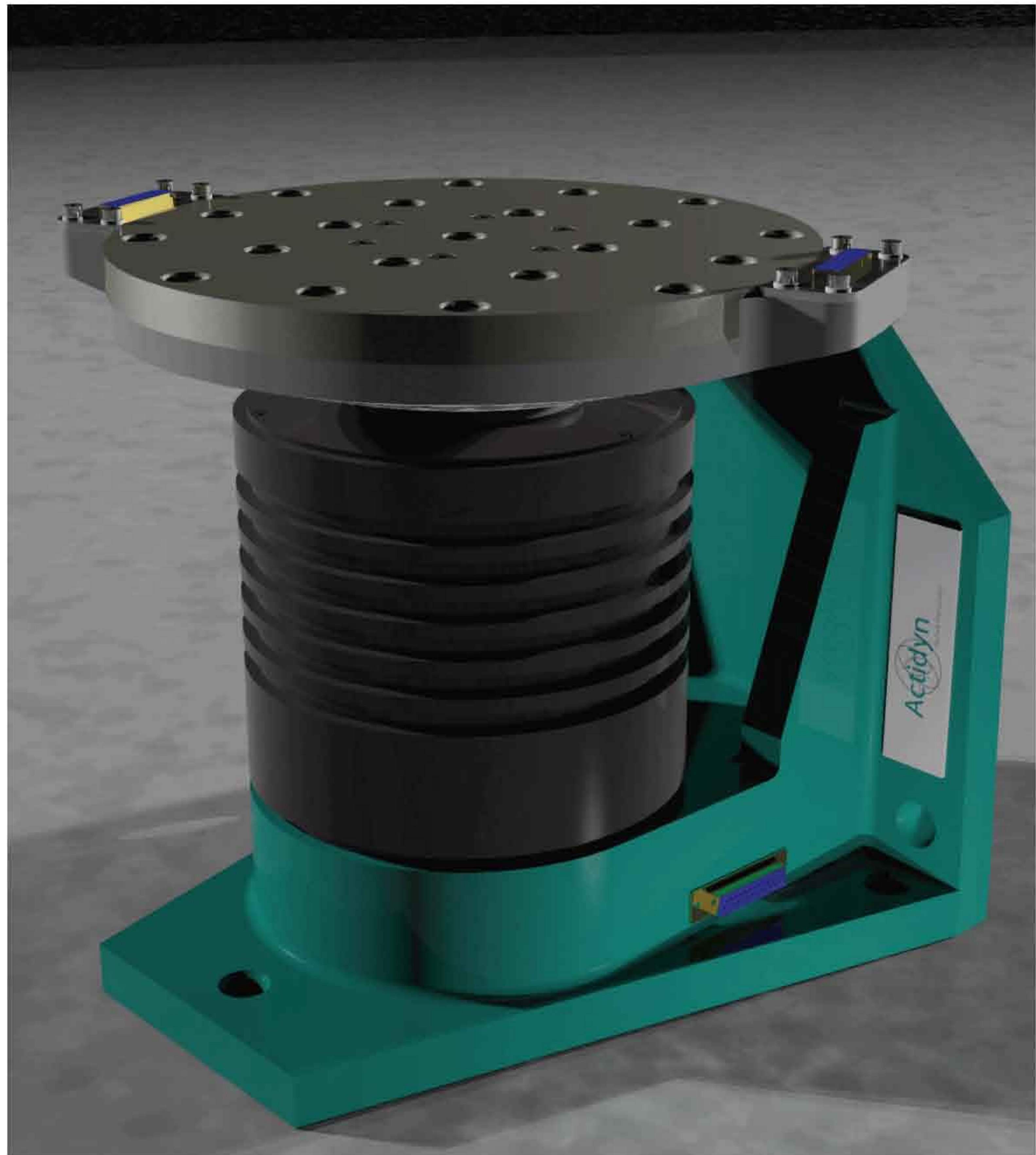


**RT 1100 SERIES**

**ONE AXIS MEMS TABLE**

**Options:**

- **Temperature chamber:  
- 55°C to +185°C**
- **Customized electrical  
slip-rings**
- **Optical fiber rotary joint  
and Ethernet network**
- **Fluid rotary joints**



The single axis table series RT 1100 is an accurate position rate system designed for the test and calibration of MEMS, gyros, accelerometers and inertial guidance systems.

Its brushless motor technology allows for large servo bandwidth and high dynamic response.

**81 Fuller Way, Berlin, CT 06037-1540 USA**

**Phone: +1 (860) 829-0001 Fax: +1 (860) 829-0005**

## RT 1100 SERIES

## SPECIFICATION

	RT 1112 P	RT 1112 V	Units
<b>Payload</b>			
Mass (max)	12	12	kg
Diameter	220	220	mm
Height	300	300	mm
<b>Geometry</b>			
Table top diameter	250	250	mm
Wobble	± 5	± 5	Arc second
Rotation	continuous	continuous	
<b>Position</b>			
Accuracy	± 7	N/A	Arc second
Command Increment	0.001	N/A	degree
Repeatability	± 2	N/A	Arc second
<b>Rate</b>			
Range	± 2700	± 2700	°/s
Accuracy	± 0.005		%
Command increment	0.001		°/s
Stability Over 360°	0.001	0.001	%
<b>Dynamic</b>			
Peak torque	127	127	Nm
Nominal torque	23	23	Nm
Inertia (no load)	0.065	0.065	m <sup>2</sup> kg
No load Peak acceleration	80 000	80 000	°/s <sup>2</sup>
No load continuous accel	20 000	20 000	°/s <sup>2</sup>
Servo bandwidth	>100	>100	Hz
<b>Electrical slip-rings</b>			
Alternative optional configuration on demand	30 Channels 2A	30 Channels 2A	
<b>Computer Interfaces</b>			
	RS232, Ethernet and ActiveX software remote		
<b>Input / Output</b>			
Analog input / output (opt)	14 bits, ± 10 V	NA	
Digital output (opt)	1/rev and 5 000/rev	1/rev	

ACTIDYN SYSTEMES ALSO MANUFACTURES THESE EQUIPMENTS TO BETTER SERVE YOU

